

第1回 Medical Ground Rounds (MGR)

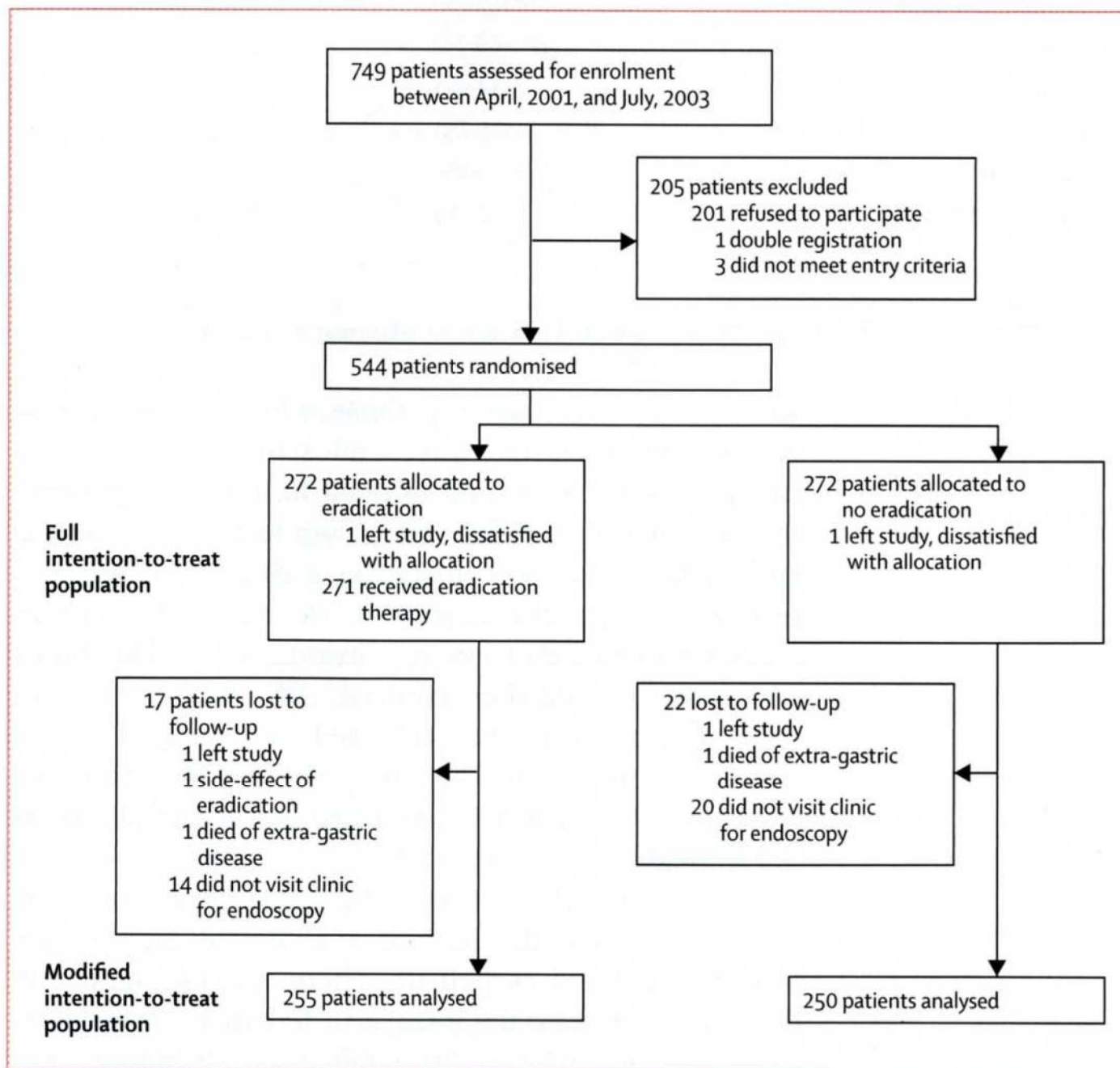
トピック: HP、ESD、胃がん

文献: Lancet 2008;372:392-97

Effect of eradication of *Helicobacter pylori* on incidence of metachronous gastric carcinoma after endoscopic resection of early gastric cancer: an open-label, randomised controlled trial

*Kazutoshi Fukase, Mototsugu Kato, Shogo Kikuchi, Kazuhiko Inoue, Naomi Uemura, Shiro Okamoto, Shuichi Terao, Kenji Amagai, Shunji Hayashi, Masahiro Asaka, for the Japan Gast Study Group**

2010年4月26日 消化器内科 吉田 貴史・小嶋裕一郎



- ・HP陰性、エントリー前に他部位の胃癌を認めたもの、胃手術歴のあるものは除外
- ・HPに関しては生検および迅速ウレアーゼテストを行い、いずれかで陽性であることを確認
- ・最終的に除菌群255名、非除菌群250名で分析

Figure 1: Trial profile

	Eradication group (N=255)	Control group (N=250)
Newly diagnosed	114 (45%)	110 (44%)
Post-resection	141 (55%)	140 (56%)
Time between endoscopic resection and randomisation among post-resection patients (years)	1.2 (0.9-2.9)	1.6 (1.0-3.7)
Sex		
Male	195 (76.5%)	191 (76.4%)
Female	60 (23.5%)	59 (23.6%)
Age (years)	68 (62-73)	69 (64-73)
Location of resected lesion		
Upper	29 (11.4%)	33 (13.2%)
Middle	96 (37.6%)	103 (41.2%)
Lower	130 (51.0%)	114 (45.6%)
Histology of resected lesion		
Intestinal type	253 (99.2%)	247 (98.8%)
Diffuse type	2 (0.8%)	3 (1.2%)
Depth of invasion		
Mucosa	245 (96.1%)	241 (96.4%)
Submucosa	10 (3.9%)	9 (3.6%)
Diameter of lesion (mm)	10 (8-15)	11 (8-15)
Degree of atrophy in corpus		
None	1 (0.4%)	1 (0.4%)
Mild	45 (17.6%)	35 (14.0%)
Moderate	101 (39.6%)	109 (43.6%)
Severe	86 (33.7%)	84 (33.6%)
Unknown	22 (8.6%)	21 (8.4%)
Intestinal metaplasia		
Antrum—negative	48 (18.8%)	49 (19.6%)
Antrum—positive	175 (68.7%)	172 (68.8%)
Antrum—unknown	32 (12.5%)	29 (11.6%)
Corpus—negative	91 (35.7%)	96 (38.4%)
Corpus—positive	129 (50.6%)	118 (47.2%)
Corpus—unknown	35 (13.7%)	36 (14.4%)

Data are n (%) or median (IQR).

Table 1: Baseline characteristics of patients in the modified intention-to-treat population

両群の基礎的な情報に関しては優位差なし

	Eradication group (N=9)	Control group (N=24)	p value
Sex			0.597*
Male	7 (77.8%)	21 (87.5%)	
Female	2 (22.2%)	3 (12.5%)	
Age (years)	70 (71-73)	71 (65-74)	0.584†
Location			0.160‡
Upper	1 (11.1%)	3 (12.5%)	
Middle	6 (66.7%)	8 (33.3%)	
Lower	2 (22.2%)	13 (54.2%)	
Histology			1.000*
Intestinal type	9 (100%)	23 (95.8%)	
Diffuse type	0 (0.0%)	1 (4.2%)	
Depth of invasion			1.000*
Mucosa	8 (88.9%)	23 (95.8%)	
Submucosa	1 (11.1%)	1 (4.2%)	
Diameter of carcinoma (mm)	8 (7-15)	7 (5-10)	0.383†

Data are n (%) or median (IQR). *Fisher's exact test. †Wilcoxon rank sum test. ‡Goodness of fit test.

Table 2: Characteristics of patients who developed metachronous carcinoma

異時性発癌を来たした症例の特徴

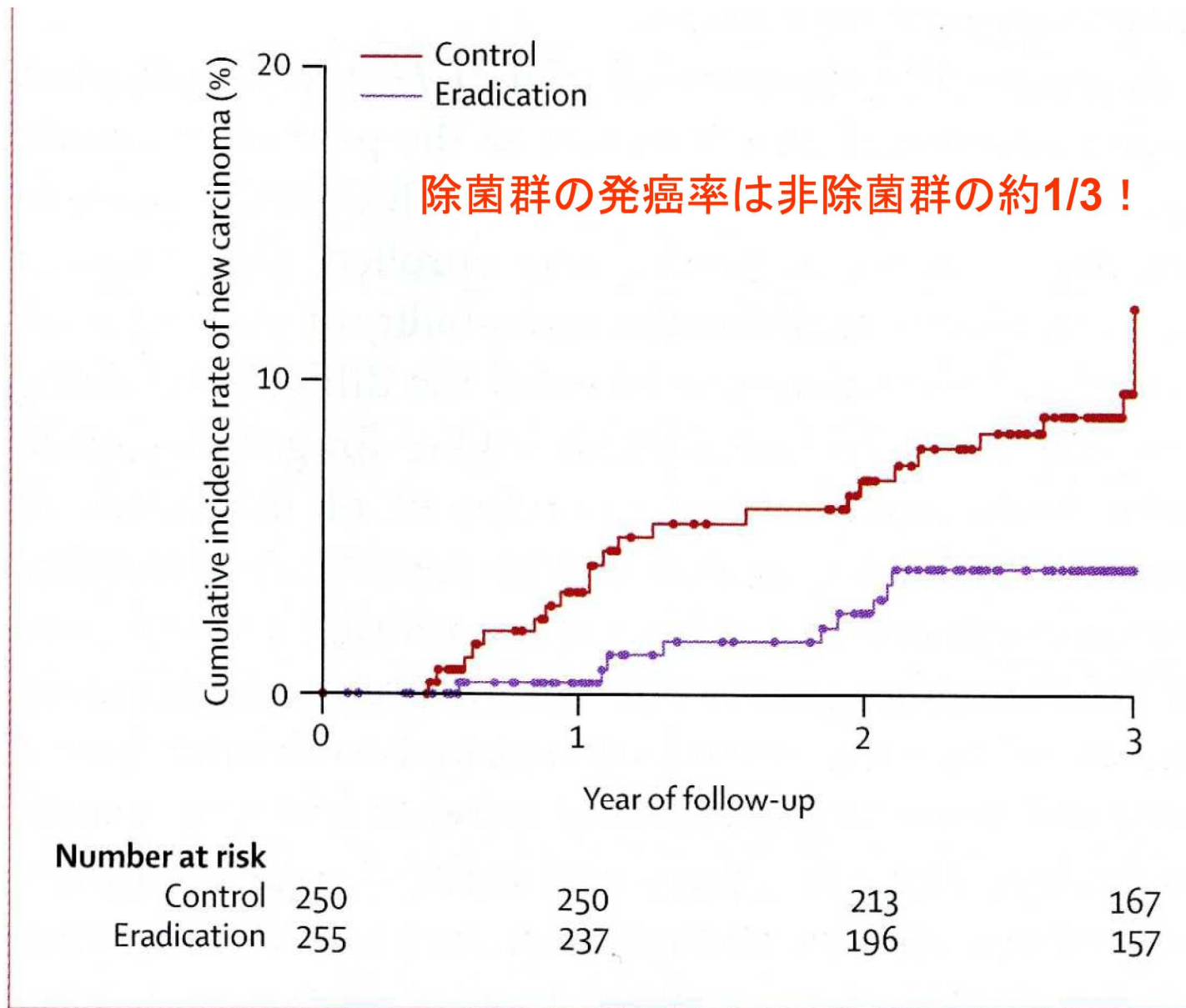


Figure 2: Kaplan-Meier analysis of cumulative incidence rate of new carcinoma
 Kaplan-Meier分析による新規発癌割合

当院におけるESD件数の年次推移

件

