

# 方法

- eThekweni HIV-tuberculosis clinic in Durban, South Africa
  - 2005年6月28日～2008年7月11日
  - 結核とHIVの重複感染者642名  
(喀痰塗抹抗酸菌検査陽性、 $CD4+ < 500mm^3$ )
  - Open-label, randomized, controlled trial
  - 割り付け
- ①結核治療中に抗レトロウイルス治療開始群  
integrated therapy group  
→early群、late群に分かれる
- ②結核治療後に抗レトロウイルス治療開始群  
sequential therapy group

- 結核治療の方法
- 2週間(3) intensive combination-drug regimen  
4週間(5) continuation regimen
- Endpoint  
→The primary endpoint あらゆる原因による死亡

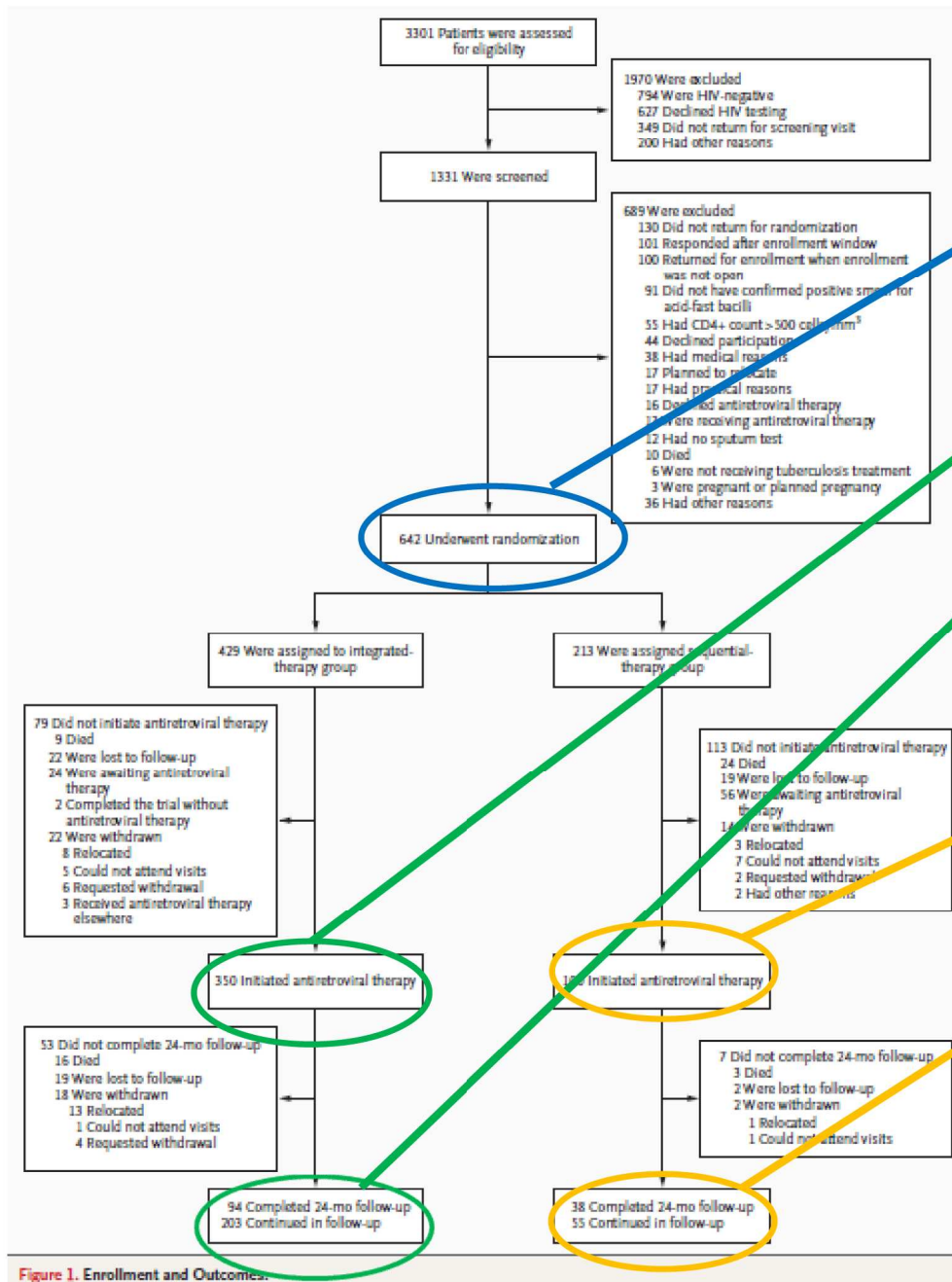
→The secondary endpoint

中毒

HIV RNA量

結核の治療結果

免疫再構築症候群



合計642人

Integrated therapy

350人

24か月後

297人

Sequential therapy

100人

24か月後

93人

Figure 1. Enrollment and Outcomes.

# 結果

**Table 1. Baseline Characteristics of the Patients.\***

Variable	Integrated Therapy (N=429)	Sequential Therapy (N=213)	P Value
Age — yr			0.48
Mean	34.4±8.38	33.9±8.18	
Range	19–72	19–60	
Male sex — %	48.7	52.1	0.45
Educational level — no./total no. (%)			0.03
Primary school or less	92/427 (21.5)	48 (22.5)	
Some secondary school	205/427 (48.0)	80 (37.6)	
Completed secondary school	130/427 (30.4)	85 (39.9)	
Employed — no./total no. (%)	251/428 (58.6)	116 (54.5)	0.35
History of tuberculosis — no. (%)	144 (33.6)	64 (30.0)	0.42
Karnofsky score — no./total no. (%)			0.44
90 or 100	251/425 (59.1)	132/209 (63.2)	
70 or 80	165/425 (38.8)	75/209 (35.9)	
<70	9/425 (2.1)	2/209 (1.0)	
Median CD4+ count (interquartile range) — cells/mm <sup>3</sup> †	150 (77–254)	140 (69–247)	0.32
Median log viral load (interquartile range) — copies/ml‡	5.2 (4.5–5.6)	5.2 (4.7–5.6)	0.22
WHO stage 4 HIV infection — no. (%)§	21 (4.9)	10 (4.7)	1.00
Presence of extrapulmonary tuberculosis — no. (%)	24 (5.6)	10 (4.7)	0.71
Median no. of days of tuberculosis therapy at randomization (interquartile range)	9 (1–14)	9 (7–16)	0.15

\* Plus-minus values are means ±SD.

† Patients underwent randomization on the basis of the CD4+ count at screening (criterion for study enrollment, <500 cells per cubic millimeter). However, for 16 patients, the CD4+ count at enrollment was more than 500 cells per cubic millimeter.

‡ The viral load at baseline was measured in 397 patients in the integrated-therapy group and in 201 patients in the sequential-therapy group.

§ The remainder of patients had stage 3 infection, according to criteria of the World Health Organization (WHO).

**Table 2.** Death Rates and Hazard Ratios, Stratified According to CD4+ Cell Count.

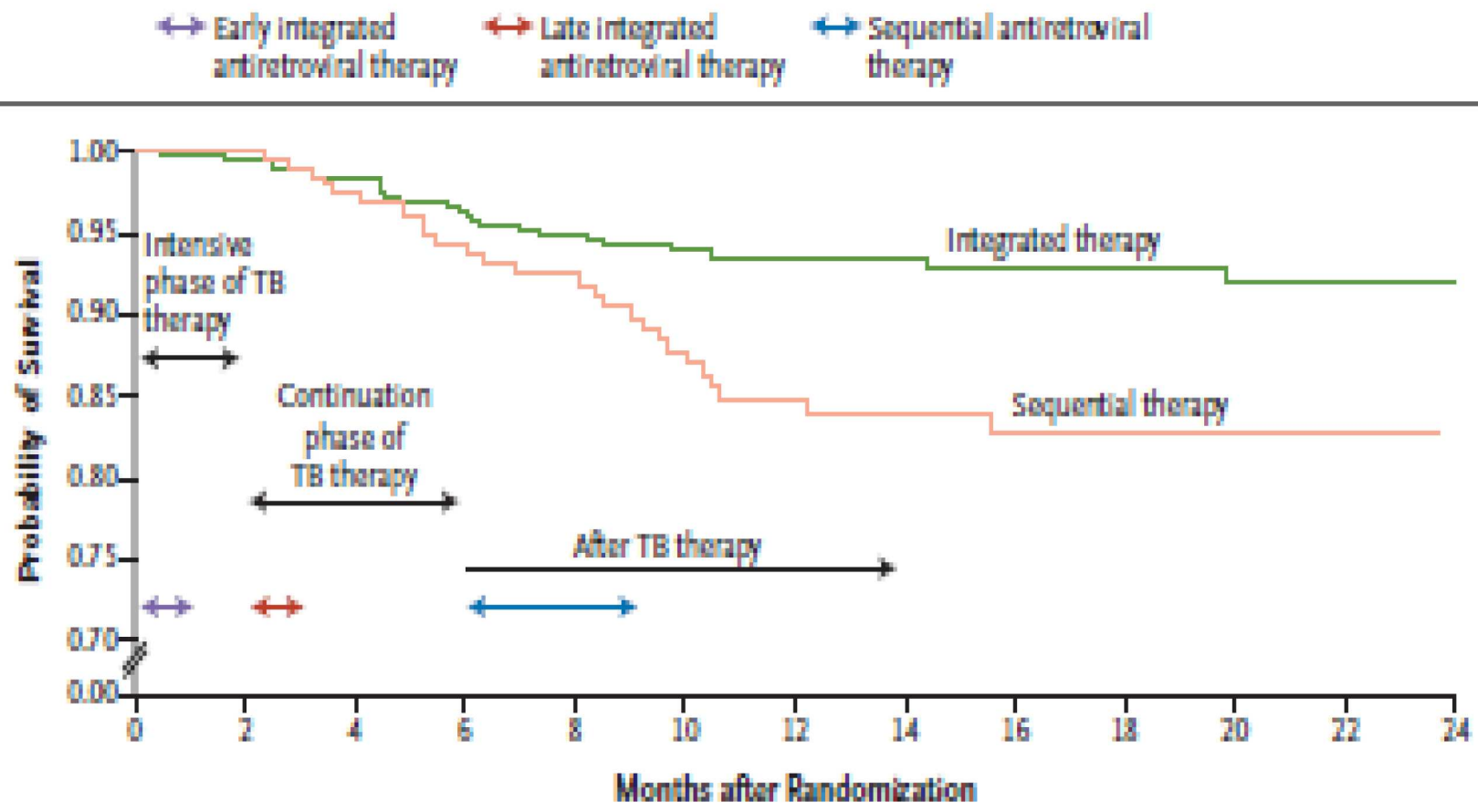
CD4+ Count	Integrated Therapy				Sequential Therapy				Hazard Ratio (95% CI)*	P Value
	No. of Patients	No. of Person- Yr	No. of Deaths	Death Rate/ 100 Person-Yr (95% CI)	No. of Patients	No. of Person- Yr	No. of Deaths	Death Rate/ 100 Person-Yr (95% CI)		
All patients	429	467	25	5.4 (3.5–7.9)	213	223	27	12.1 (8.0–17.7)	0.44 (0.25–0.79)	0.003
≤200 cells/mm <sup>3</sup>	273	281	23	8.2 (5.2–12.3)	138	137	21	15.3 (9.6–23.5)	0.54 (0.30–0.98)	0.04
>200 cells/mm <sup>3</sup>	156	186	2	1.1 (0.1–3.9)	75	86	6	7.0 (2.6–15.3)	0.16 (0.03–0.79)	0.02

\* Hazard ratios are for the integrated-therapy group, as compared with the sequential-therapy group.

## Primary endpoint(死亡)

Integrated therapyの方が、死亡率は低い。

CD4+ cellの数で層別しても、死亡率は  
integrated therapyの方が低い。



**Figure 2. Kaplan-Meier Survival Curves.**  
 TB denotes tuberculosis.

## Secondary endpoint 結核治療の結果

**Table 3. Clinical Outcomes of Tuberculosis Therapy.\***

Outcome	Integrated Therapy (N=343)		Sequential Therapy (N=171)		P Value
	Repeated Therapy of Tuberculosis (N=116)	First Episode of Tuberculosis (N=227)	Repeated Therapy of Tuberculosis (N=58)	First Episode of Tuberculosis (N=113)	
	<i>number (percent)</i>				
Tuberculosis cure†	67 (57.8)	131 (57.7)	31 (53.4)	67 (59.3)	1.00
Successful completion‡	16 (13.8)	42 (18.5)	5 (8.6)	16 (14.2)	0.20
Therapy success (cure plus successful completion)	83 (71.6)	173 (76.2)	36 (62.1)	83 (73.5)	0.07
Died before completion of therapy	7 (6.0)	12 (5.3)	6 (10.3)	9 (8.0)	0.19
Therapy interruption	2 (1.7)	3 (1.3)	3 (5.2)	7 (6.2)	0.01
Therapy failure§	0	0	0	1 (0.9)	0.33
Loss to follow-up	13 (11.2)	13 (5.7)	6 (10.3)	6 (5.3)	1.00
Therapy outcome unknown because of transfer to another clinic	1 (0.9)	5 (2.2)	2 (3.4)	1 (0.9)	1.00
Other outcome	1 (0.9)	1 (0.4)	0	0	
Outcome pending (still receiving therapy at time of analysis)	9 (7.8)	20 (8.8)	5 (8.6)	6 (5.3)	0.49

\* Only patients who were enrolled in the study at least 7 months before the date of the analysis are included. Percentages may not total 100% because of rounding.

† Tuberculosis cure was defined as a sputum smear that was negative for acid-fast bacilli close to the time of therapy completion.

‡ Successful completion of therapy was defined as the use of more than 85% of the prescribed medication.

§ Therapy failure was defined as the presence of a positive smear or culture for *Mycobacterium tuberculosis* obtained at least 5 months after the initiation of tuberculosis therapy.

Integrate therapyと  
sequential therapy  
の結果に違いはない。

First episodeと  
repeated therapyの患者でも結果に違いはない。